

Maggie MacIsaac

Chief Executive, Hampshire CCGs Partnership

Heather Hauschild

Chief Officer, West Hampshire CCG

**NHS Commissioning Update for Hampshire Health &
Adult Social Care Select Committee**

20 June 2017

- **Hampshire CCG Partnership**

- Fareham & Gosport CCG, North Hampshire CCG, North East Hampshire and Farnham CCG, South Eastern Hampshire CCG (population 850,000)
- Purpose is to enable us to accelerate improvements in patient care, to be more effective, and to reduce duplication.

- **West Hampshire CCG**

- Serving a population of over 550,000 from Witchurch in the north to the New Forest in the south, encompassing Winchester, Andover, Romsey and Eastleigh and surrounding villages.
- Our care strategy 'changing the shape of care delivery' changes the focus from a reactive to a proactive care model. People are less dependent on hospital services as community and GP services are developed to enable people to help themselves maintain their health.

Rationale for The Partnership

85 of the c200 CCGs in England now share a single Accountable Officer.
Why did we choose to work together?

CCGs provide a strong local focus, engaging clinicians and patients to redesign services.



Working together with one leadership team across our partnership we are also able to:

- Have greater leverage & influence
- Work effectively with local authorities
- Bring a consistent commissioning voice
- Share talent and skills of clinicians, managers and lay members
- Reduce duplication
- Better support System Reform

We embarked on a journey together in a spirit of partnership

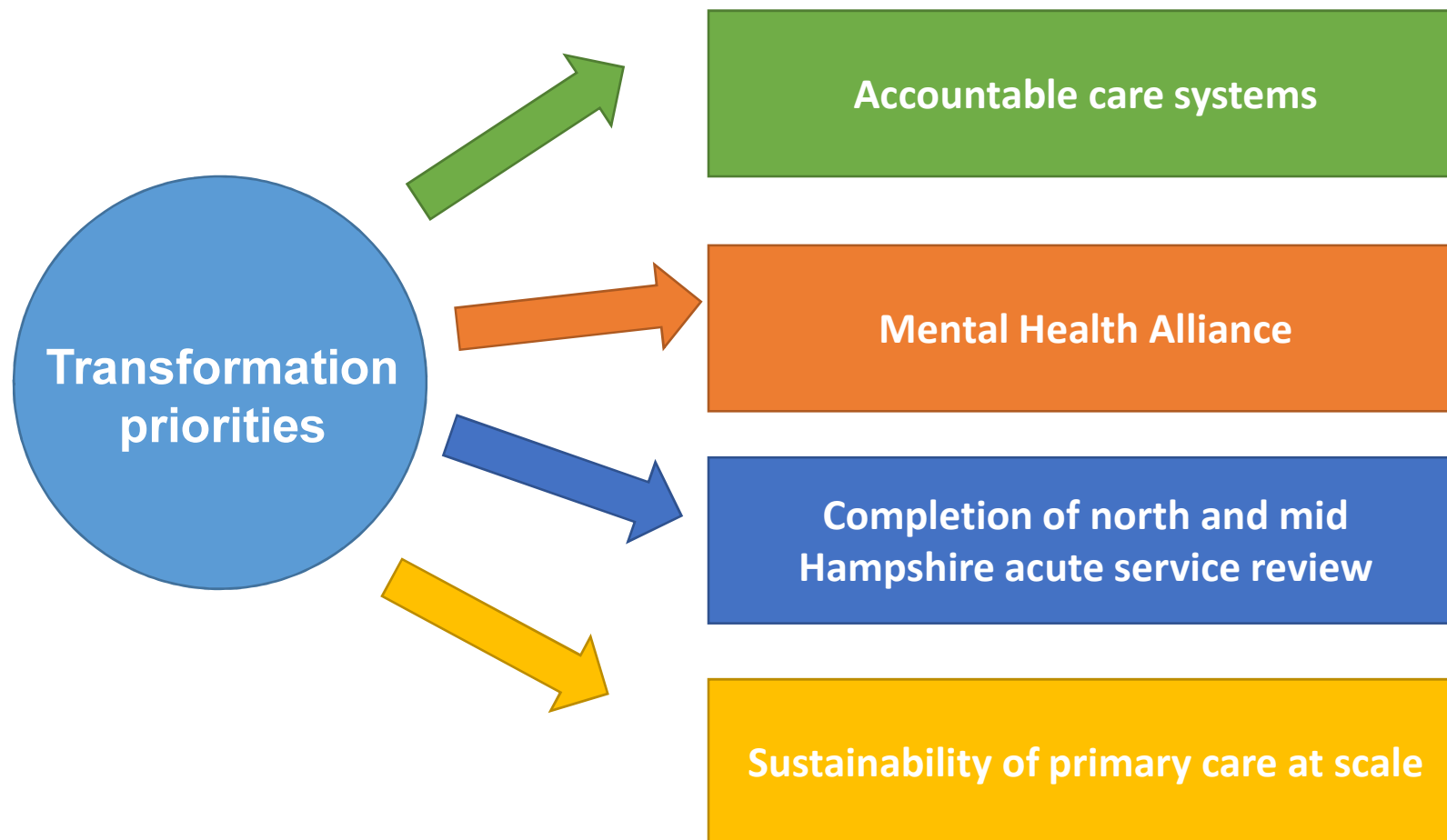
Working together

- West Hampshire CCG and the Partnership working together, with Hampshire County Council, for the Hampshire population.
- Working together to deliver the Hampshire and Isle of Wight Sustainability and Transformation plan.
- Emphasis on improving services with communities in each locality, and acting together, with a single approach at county level.
- Developing effective STP governance structures across Hampshire
- Joint A&E delivery boards to consider hospital activity, management of patient flow and delayed transfers of care.
- Hosting services across Hampshire:
 - West Hampshire: Continuing Healthcare, Safeguarding, Mental Health
 - Partnership: Children, Ambulance Services

The HIOW Sustainability and Transformation Plan

- Investing in prevention and supporting people to look after their own health
- Strengthening and investing in primary and community care
- Simplifying the urgent and emergency care system
- Improving the quality of hospital services
- Making tangible improvements to mental health services
- Creating a financially sustainable health system for the future

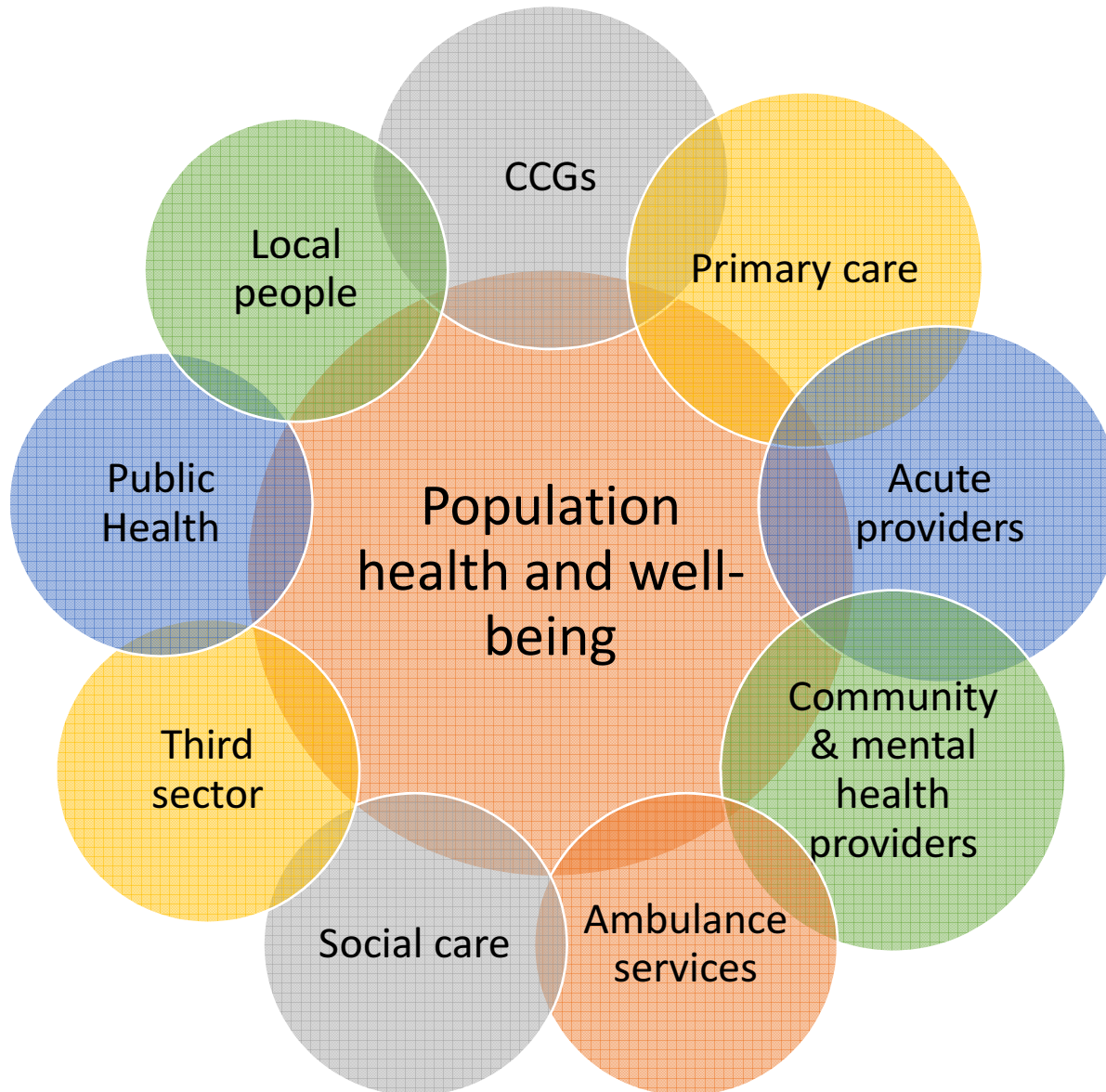
Transformation priorities



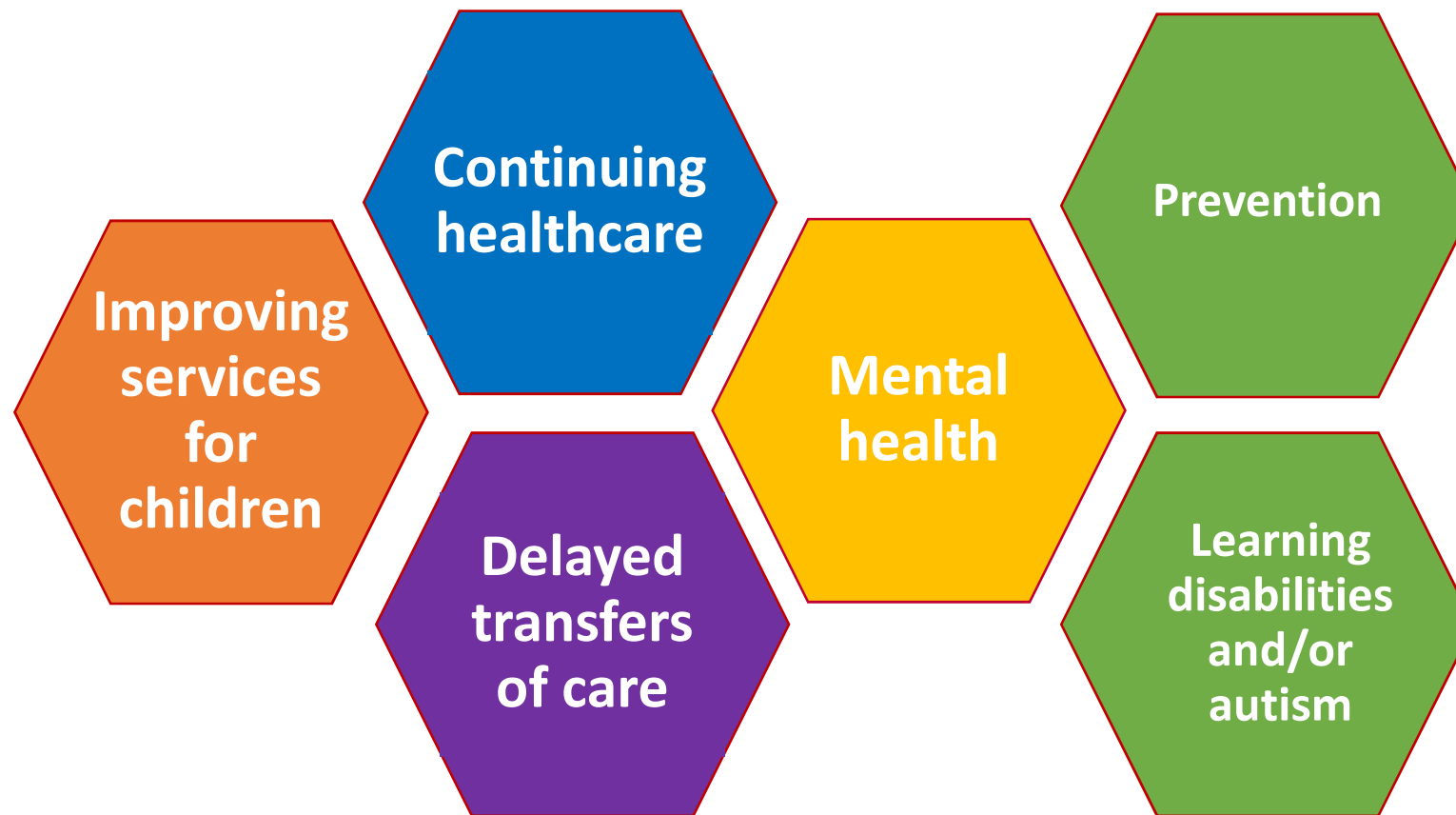
Service redesign in four local care/delivery systems



Local delivery systems



Priority areas for our joint work



Involving our communities



Future opportunities and challenges

- Stronger/closer working with local government
- New government – ongoing austerity
- Limited structural change
- Making better use of our estate
- Workforce
- Brexit
- Primary care
- New care models

However working together is key to success